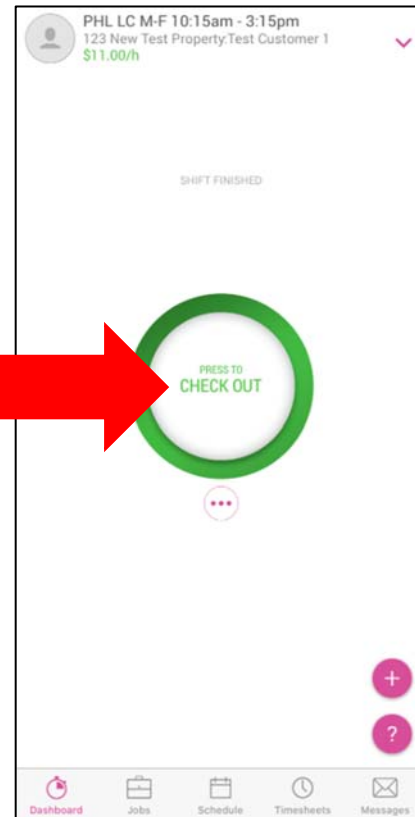
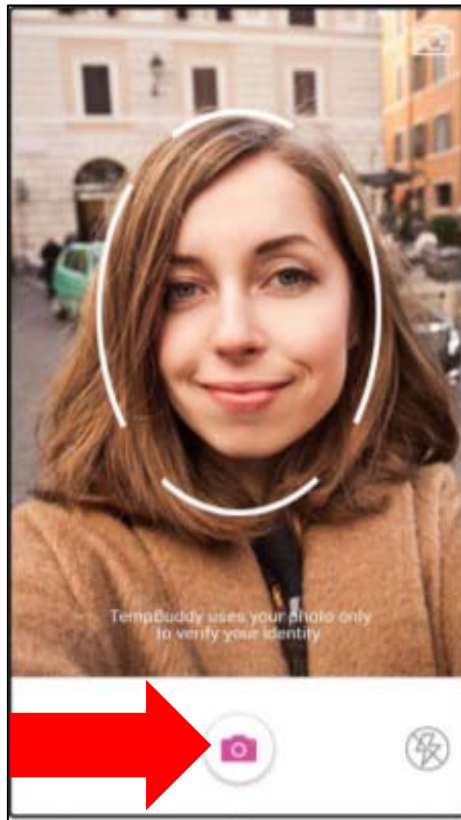
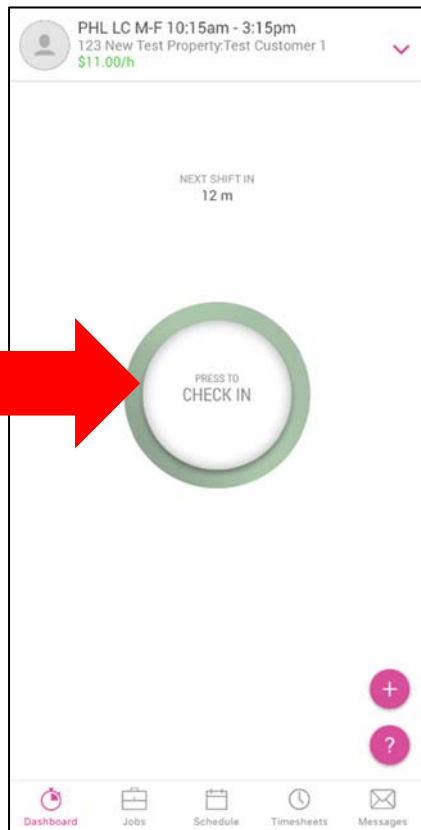


Steps to Ensure Same Day Pay

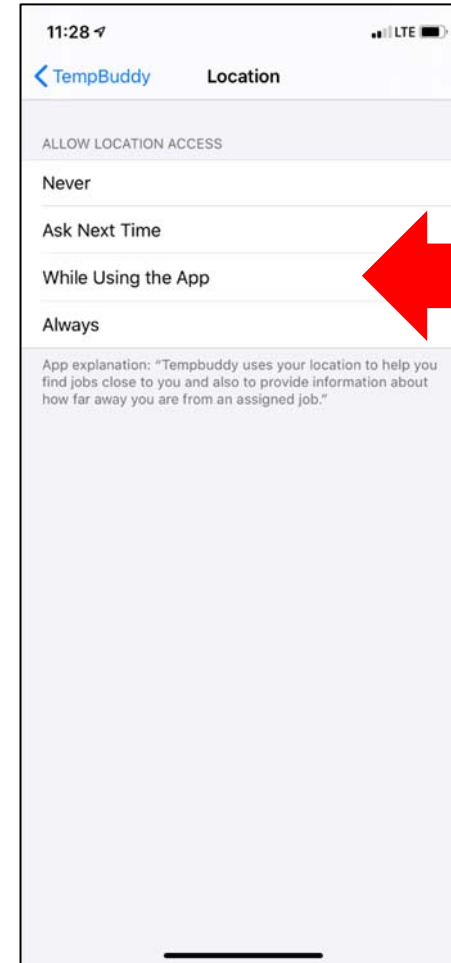
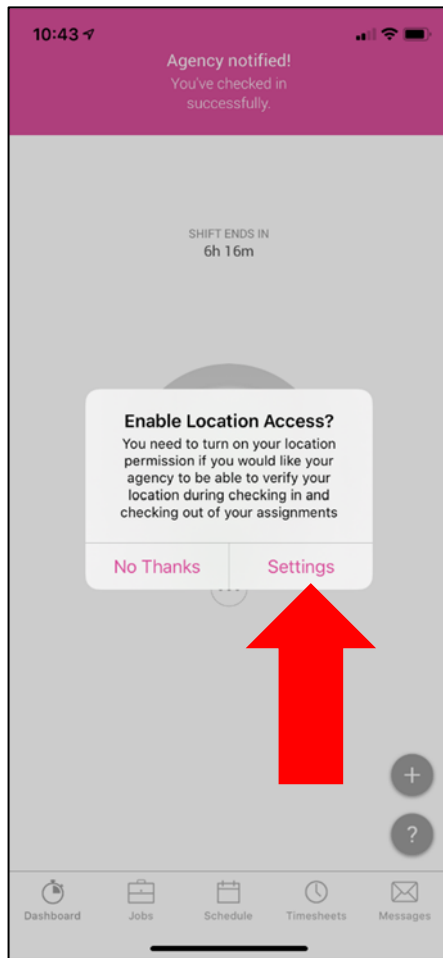
Check In and Out



Note: Make sure your daily selfie is in front of the leasing office so it is visible you are on property

If you did not meet this requirement, you will receive an email stating you have not qualified for same day pay.

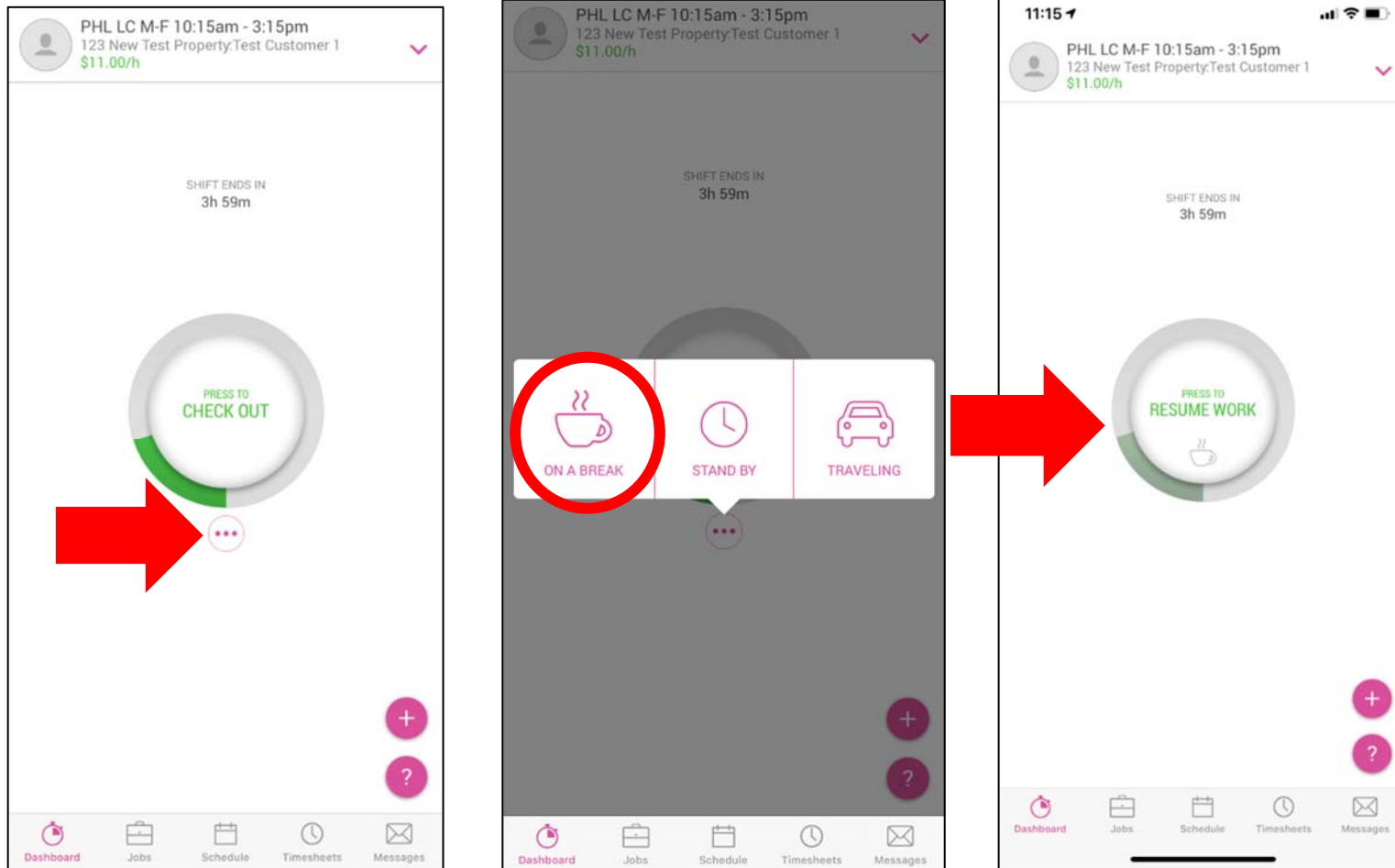
GPS: If App Does not Have Permission Granted for Location Detection



Note: If the permission is granted for location detection, but has failed to get an accurate location at the property due to poor cell service or poor cell reception, you will receive a message stating "Your device could not receive a valid location update in your current position. Your agency will not be able to verify your location for this action"

If you did not meet this requirement, you will receive an email stating you have not qualified for same day pay.

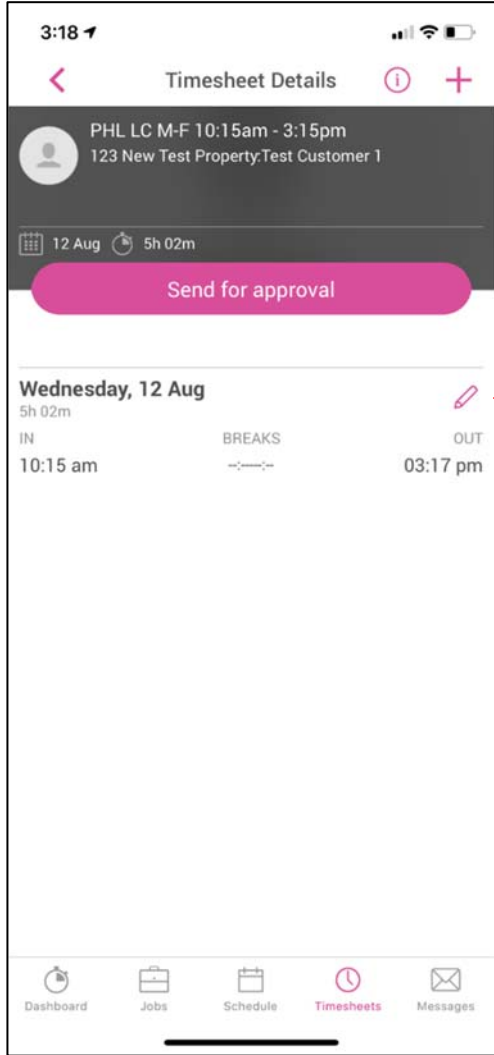
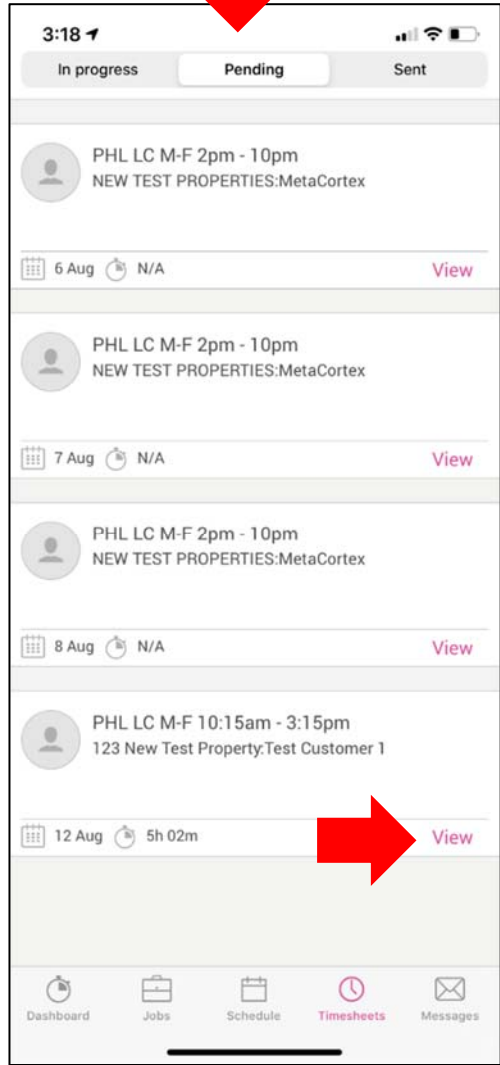
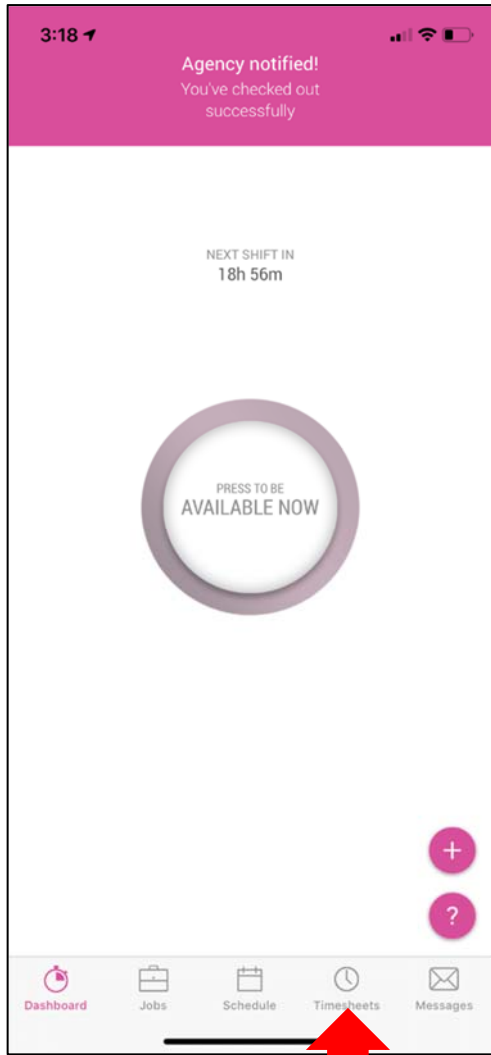
Use the Break Feature

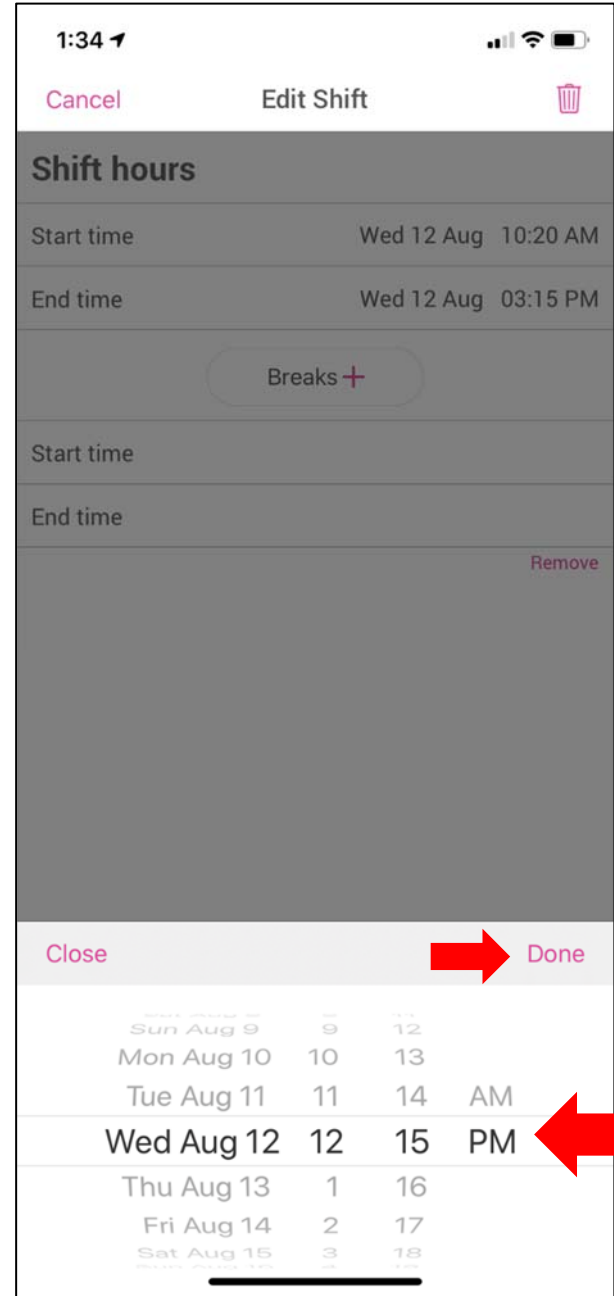
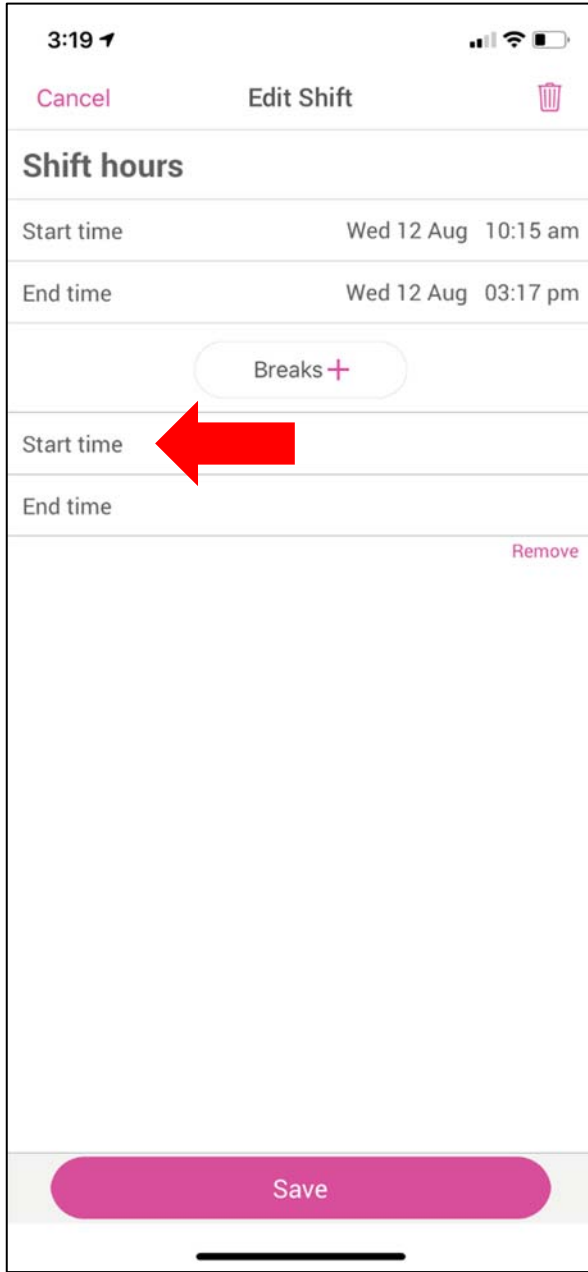
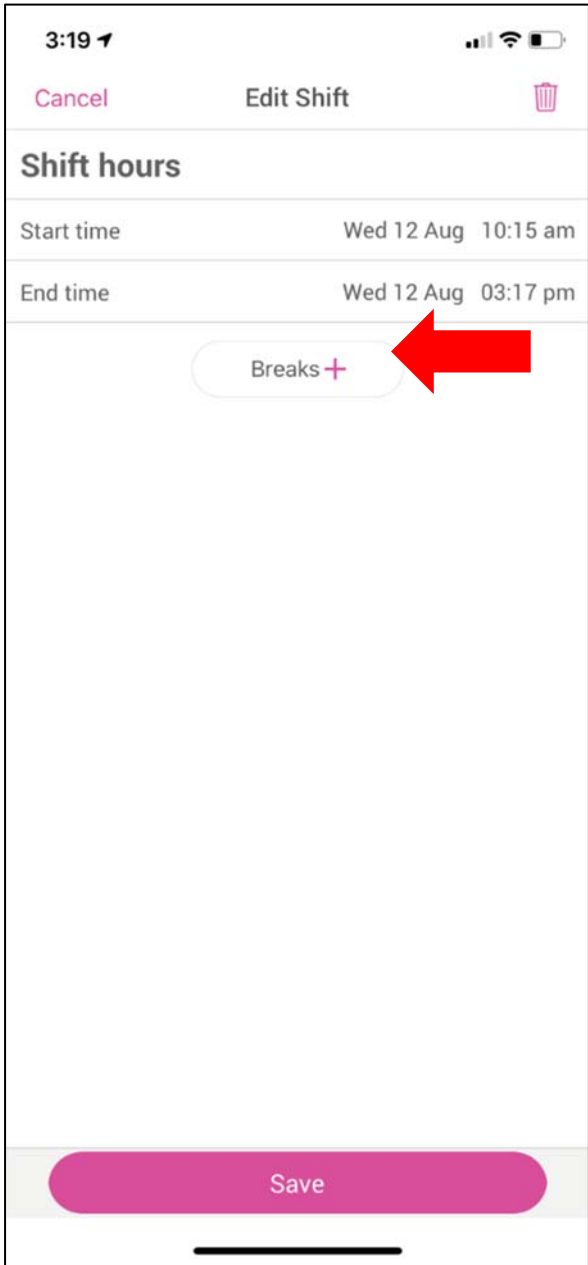


Note: This feature will be only be used for meal breaks or if you need to stop working for a period of more than 20 minutes. You will not have to use the app for any rest breaks of 20 minutes or less.

If you did not meet this requirement, you will receive an email stating you have not qualified for same day pay.

Submit Your Timecard





1:34

Cancel Edit Shift

Shift hours

Start time Wed 12 Aug 10:20 AM

End time Wed 12 Aug 03:15 PM

Breaks +

Start time Wed 12 Aug 12:15 PM

End time

[Remove](#)

Save

1:34

Cancel Edit Shift

Shift hours

Start time Wed 12 Aug 10:20 AM

End time Wed 12 Aug 03:15 PM

Breaks +

Start time Wed 12 Aug 12:15 PM

End time

[Remove](#)

Close Done

Sun Aug 9	10	12	
Mon Aug 10	11	13	
Tue Aug 11	12	14	AM
Wed Aug 12	1	15	PM
Thu Aug 13	2	16	
Fri Aug 14	3	17	
Sat Aug 15	4	18	

Save

3:19

Cancel Edit Shift

Shift hours

Start time Wed 12 Aug 10:15 am

End time Wed 12 Aug 03:17 pm

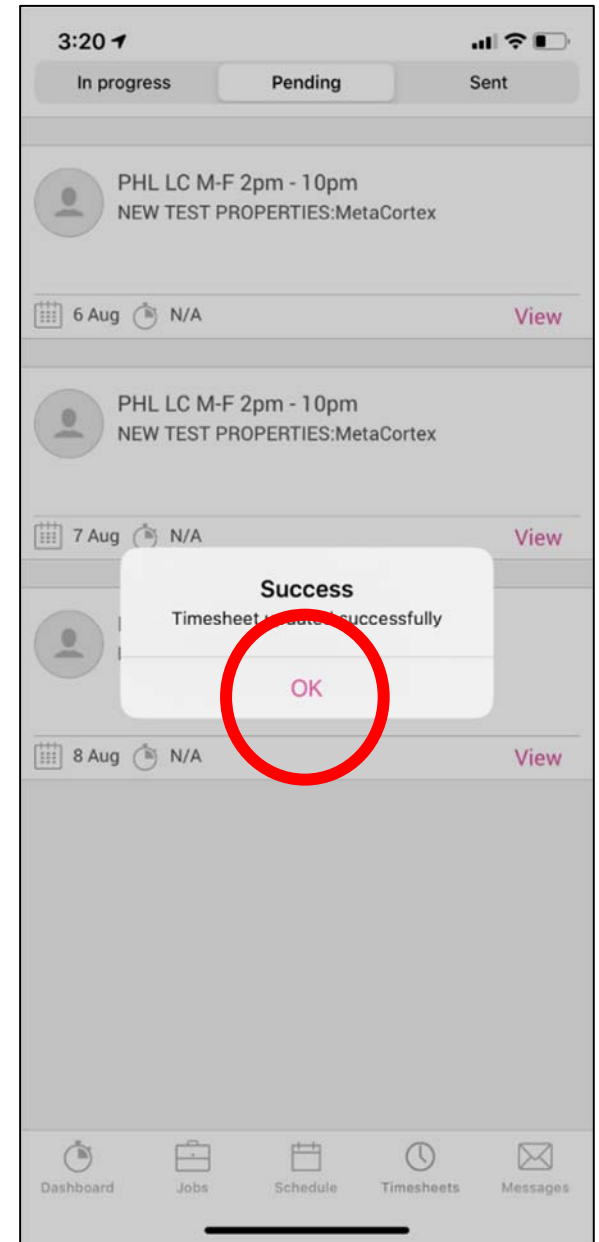
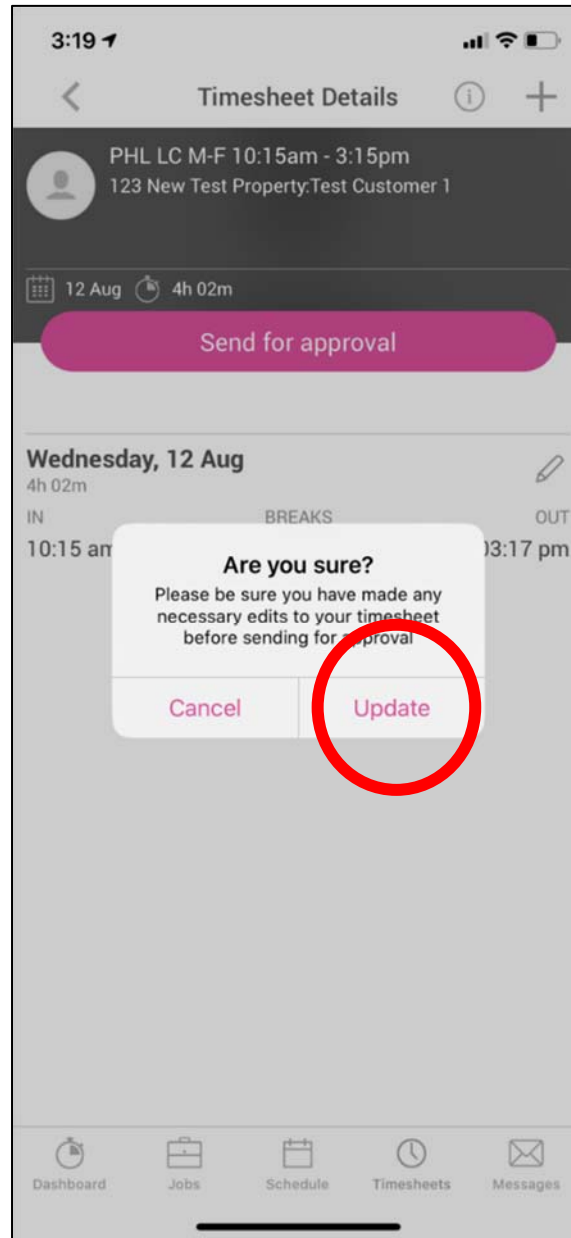
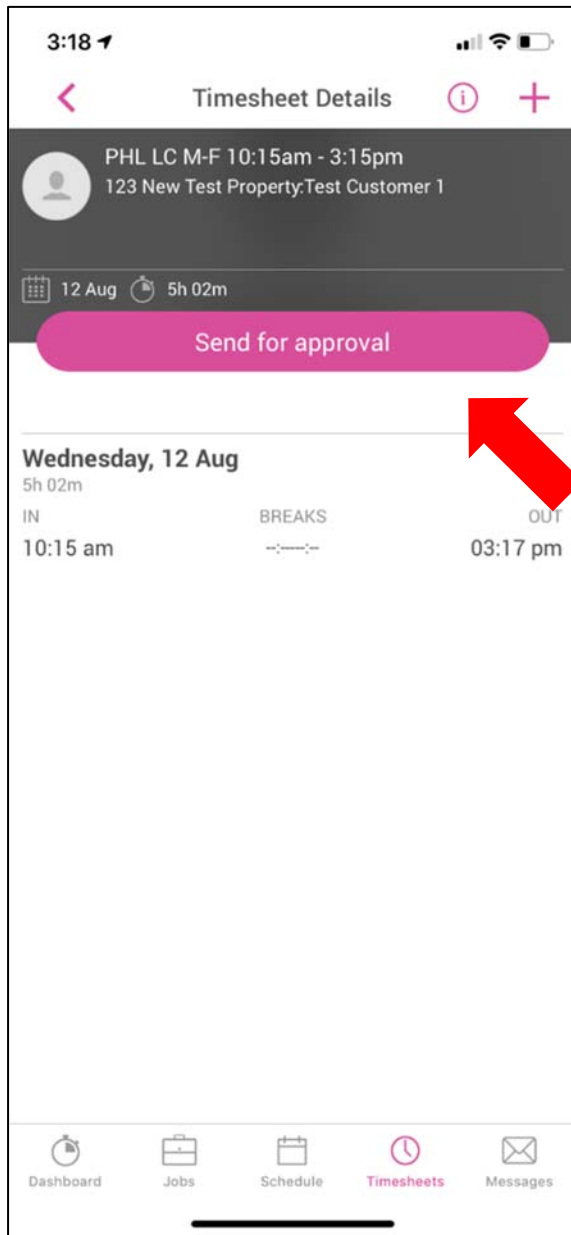
Breaks +

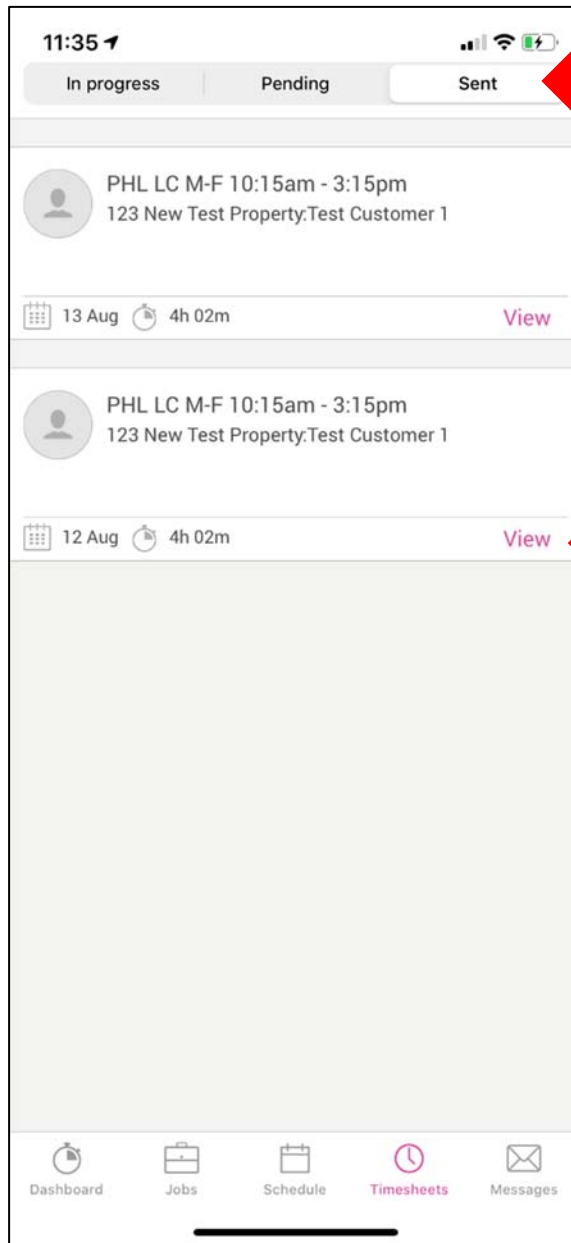
Start time Wed 12 Aug 12:15 PM

End time Wed 12 Aug 01:15 PM

[Remove](#)

Save





Note: If you need any assistance with submitting your timesheet, please email timesubmittal@intersolutions.com or call/text 856-230-7835.

If you did not meet this requirement, you will receive an email stating you have not qualified for same day pay.